

Parish News - November 2022

HELLO AGAIN

In this November edition of the Newsletter we remind you about the upcoming road closure to allow the Remembrance Day Service to take place. And with Christmas festivities fast approaching we have lots of exciting events for you to look forward to! There is also plenty of local news from Hampton-in-Arden and Catherine-de-Barnes as well as important updates on local clubs and societies. Read on...



REMEMBRANCE SUNDAY - SERVICE AND ROAD CLOSURE ON 13TH NOVEMBER 2022

This year's Remembrance Day service and procession will be on Sunday 13th November 2022 and as long as the weather is not too wet, will follow the successful format from last year with the full service held around the war memorial.

The parade down High Street to the war memorial will assemble by the lychgate outside the church at 10.15 am. The congregation, already gathered, is asked to stand on the Engine Mews side of the Memorial to enable those taking part in the parade to gather on the Shadowbrook Lane side. The service is expected to last around 40 minutes and the Parish Council has arranged for an outdoor public address system so that everyone present can hear and participate in the service.

Should the weather be extremely wet or windy, the service will move to the church.

Residents should note that the High Street, Meriden Road and roads around the war memorial will be **closed** to through traffic from 10 am until 12 noon.

Access to and from the Sports Club will only be permitted from Catherine-de-Barnes Lane and Shadowbrook Lane west between these times, no access will be permitted from the village side. Please advise any friends and relatives who may be visiting of these temporary closures and can we please request that everyone respects the solemnity of the occasion and refrains from travelling through the village during these times.

Marshalls will be deployed to control traffic on the day. If any residents would like to help and wear a high viz jacket then please contact Julie our Parish Clerk. Let's all pray for a dry day!

CHRISTMAS TREE LIGHT SWITCH ON - 2ND DECEMBER

We are delighted to report that our annual event to turn on the Christmas Tree lights at Hampton-in-Arden Village Green will be back this year! The Meriden Rotary Club have again kindly offered to support the event and Santa will be back with his sleigh. Our local choir will also be returning and, this year we have a new and improved sound system (which the choir and piano will be hooked up to!) meaning everyone will be able to enjoy the festive carols.



● The event will begin between 5.30pm and 5.45pm with carols from the local choir. ● Santa will commence the official countdown to the switch on at 6pm. **We will see you there!**

A THANK YOU...

A huge thank you to Central Fast Response for providing first aid support to both our Remembrance Day service and Christmas Tree Lights Switch On event – we couldn't go ahead without you!

VILLAGE PARKING

During the recent survey of residents' opinions conducted as part of our preparations for updating our Neighbourhood Plan, a significant number of residents, pedestrians and motorists asked that something should be done to address the parking issues along and around the High Street shops. In particular it was felt that some road users did not understand the road markings, parked dangerously around the junctions and frequently parked on pavements, impeding pedestrian access.

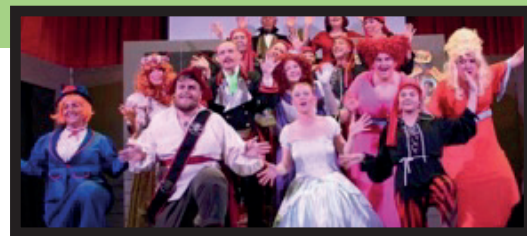
As a Parish Council we are very aware of the need to balance the needs of local businesses and residents' concerns, but equally we cannot ignore these arguments particularly where the safety of pedestrians and other road users is concerned. **We therefore propose to open discussions with Solihull Highways to assess possible options to improve safety that are available to us.**

Hampton-in-Arden Parish Council

HAMPTON IS BACK ON STAGE!

After the huge success of the Pantomime last year, Hampton on Stage are proud to bring you this year's hilarious offering!!

When the evil Sheriff of Nottingham and his gormless guards threaten the villagers of Sherwood, feisty Maid Marion hires a band of freedom fighters for protection. But when Robin and his Merry Men arrive, she soon discovers they're not exactly what she'd ordered! With no time to lose, she persuades these hapless heroes to take centre stage for the performance of their lives - if only they could stick to the script! Follow the most outrageous outlaws in history on their side-splitting, action-packed adventure to defeat the dastardly Sheriff, storm Nottingham Castle, rescue Maid Marion and overthrow King John - all without laddering their tights! This hysterical show is a riotous romp through the medieval mayhem of Merry England, splattered with shocks and surprises, crazy characters and comic capers. With a score full of catchy, show-stopping songs and a wonderfully witty script as sharp as an arrow, this musical comedy is on target to send you all a-quiver!



● Tickets are £14 and available here <https://stagestubs.com/hampton-on-stage/hampton-on-stage-presents-robin-and-the-sherwood-hoodies>

● Shows are 7pm on Wednesday 14th December, 7pm Thursday 15th December, 7pm Friday 16th December, 11.30am and 4.30pm Saturday 17th December.

TRAFFIC CALMING AND PEDESTRIAN SAFETY

Solihull MBC Highways are currently carrying out the detailed design for the Phase 2 works in Hampton-in-Arden which will concentrate on reducing vehicle speeds through the village. It will comprise a new gateway and a pair of speed cushions on Solihull Road, a pair of speed cushions on High Street and four pairs of speed cushions on Meriden Road. This work will be part funded by the HS2 Road Safety Fund, and the Parish Council through CIL funds. **Construction is anticipated early in 2023.**

In Catherine-de-Barnes the draft traffic calming proposals have been submitted to Solihull MBC Highways and have been well received. We are hopeful to secure funding from National Highways as part of their Designated Funds Programme in relation to the M42 Junction 6 Scheme. **We will let you know how this project develops.**

HS2

An exhibition was hosted by HS2 at the Arden Room to give details of the proposed viaduct across the River Blythe. Detailed drawings were available for inspection with staff on hand to field any questions. Attendees were invited to complete questionnaires and submit these to HS2 Ltd.

A number of residents have asked if the Public Right of Way (PROW) along Old Kenilworth Road between Patrick

Farm and the truck stop will be maintained during the HS2 construction. We can confirm that this PROW will be maintained with the crossing point over the haul road manned when construction work is taking place. In the longer term there will be a permanent diverted access/PROW immediately east of the existing River Blythe bridge but this will not be constructed until later in the construction programme.

PLANNING NEWS

● **2022/01291 - Replacement dwelling at 179 Hampton Lane CdeB:** Currently still "awaiting decision" but the Solihull MBC Policy & Spatial Planning team's report details reasons why they object to the scheme.

● **2022/01660 - Ashtree Grove development up to 110 homes:** Currently "awaiting decision" although four internal departments within Solihull MBC (Affordable Homes, Highways, Landscaping and Public Protection) have all raised objections to the scheme. Judging from the comment taken from the various departmental reports it looks as though a fair amount of re-design of the development will need to take place to satisfy the planners. We presume discussions within Solihull MBC are ongoing.

● **2022/00655-6 - Alterations to window spaces at The Beeches:** Currently "awaiting decision" although it is recognised by Solihull MBC Heritage that less than substantial harm is being caused to this listed building resulting from these applications and should be borne in mind when considering the potential valuable local asset the Beeches development represents.

● **2022/01312-3 - Erection of pavilion and seating area at The Beeches:** Currently still "awaiting decision" with no Solihull MBC comments at this time

● **2022/01588 - Hampton Court 55 Marsh Lane conversion of roof space:** This was approved by the Planning Committee on 10th October. However a further application (2022/01588) to increase the number of apartments to 6 has now been submitted

● **2021/01632-3 - Continued activities at Chestnuts Farm Barston and trackway:** Following a site visit earlier in the week the Planning Committee refused these applications on the 10th October on the grounds of inappropriate development in the Green Belt.

● **2022/01580 - New petanque pitches at the Hampton Sports Club:** This application was approved on 9th September.

SOLIHULL LOCAL PLAN REVIEW

The Planning Inspector has asked Solihull MBC to comment on a couple of major issues relating to the housing numbers:

- They have challenged the housing figure of 2,240 homes being delivered during the period of the plan . They suggest a quantity of 500 to be more realistic.
- They also suggest that the number of dwellings at a site in Knowle (KN2) be reviewed as they do not support the presumption of relocating Arden Academy.

These conclusions have a major impact on the overall housing policy in the Plan and their comments/responses to these issues are awaited.

HAMPTON IN ARDEN PARISH NEIGHBOURHOOD PLAN REVIEW

You will recall the current Plan only applies to the Parish as it was pre -April 2019 and doesn't include the majority of Catherine-de-Barnes which is now in the Parish. The Neighbourhood Plan is being amended to reflect the change in the Parish Council boundary.

The working group have just received comments back from Solihull MBC following a draft copy of the Plan being submitted to them in September. The comments mainly suggest re-wording to strengthen a number of policies. We envisage a final draft will be **ready for public consultation early in the New Year.**

A CHILDREN'S PLAY AREA FOR CATHERINE-DE-BARNES

At last there will be a children's play area in Catherine-de-Barnes. In conjunction with the Trustees of the Catherine-de-Barnes Village Hall and, with funding provided by the Parish Council and the Residents Association, a play area equipped with apparatus that can be seen in the accompanying picture is to be installed early next year. It will be located on land at the rear of the Village Hall. **The order has been placed and we are waiting for the final installation date.** More info as we get it.



GEORGE FENTHAM TRUST UPDATE

● Work will begin shortly to thin and manage the trees in Shadowbrook Wood which is owned and maintained by the Trust. We are working with local contractors and a specialist forestry company to identify trees that can be removed. The areas of Ash have unfortunately suffered with ash die-back and will all need to be removed. **These areas will be replanted.** The dense areas of pine will be selectively thinned to create more room and light. The logs and chippings created will be used to improve the paths and to create wildlife habitat piles.

● Each year the Trust provides financial support to the village school. This year our funding was used to provide a specialist SENCO teacher, mental health support, swimming lessons, library books and various trips to supplement the pupils' education.

● **The Trust was established to support the residents of Hampton-in-Arden village. The Trust may be able to provide financial and/or practical support to any village resident who finds themselves in hardship.** Applications for assistance must be made in writing and sent to the Clerk either by post to George Fentham Meeting Room, Marsh Lane, Hampton-in-Arden, Solihull B92 0AH or by email clerk@georgfenthamtrust.org.uk

NEW PEDESTRIAN CROSSING IN CATHERINE DE BARNES

The work on the pedestrian crossing outside the Catherine-de-Barnes Village Hall was completed on the 21st August much to the delight of local residents . The Residents Association first requested a crossing in the late 1980's (without success!) so to see one installed now shows persistence works!!



NEWS FROM THE HAMPTON-IN-ARDEN SOCIETY - A TALK FROM SAQIB BHATTI AND THE AGM

On Thursday 10th November at 7.30pm in Fentham Hall our local MP Saqib Bhatti will be giving a talk on 'Love Your Community' and taking questions afterwards. This will be preceded by the Hampton-In-Arden Society AGM. All from the village are welcome, we look forward to seeing you there.

INCREASE IN DOG FOULING

There has been a noticeable increase in dog fouling in many parts of the Parish. The law is very clear in this respect and it is the responsibility of dog owners to clear up after their pets and offenders can receive a substantial fine if convicted.

The Parish Council provides bag dispensers for those who forget their own as well as special disposal bins. It should be noted that the cost of this clearing up has to be paid for from the Parish Council budget which is funded from resident's Council tax.

PARISH COUNCIL NEWSLETTER - CLUBS SECTION

- The **Hampton Wine Society** meets five times a year in the Arden Room at the Fentham Hall to taste a variety of wines presented by Independent Wine Merchants. There is a long waiting list, but you are always welcome to apply to hamptonwinesoc@gmail.com.
 - The **Hampton Probus Club** meets on the third Monday of each month at 2.00pm in the Arden Room. The club, which is open to men aged sixty or over, organises talks, excursions, sports events, social evenings, walks and a Christmas lunch, to which guests, partners and spouses are also invited. Anyone interested in finding out more should just turn up at one of their meetings, check out the Facebook page or contact peter.j.green@live.co.uk.
 - **Hampton Singers** was established 30 years ago and rehearses on Monday evenings at the Scouts & Guides HQ in Shadowbrook Lane. The choir comprises around 50 members from in and around the Parish. They present three concerts a year, often in Hampton Church or the Fentham Hall, frequently with guest musicians and soloists. The repertoire ranges from classical, sacred, light operatic, jazz and contemporary music. If you can hold a tune and enjoy singing within a group, contact Sue Kiely on Peelwood3@gmail.com or go to www.hamptonsingers.org
- If you want to see your Club featured in this section, contact peter.green@hamptoninarden.org.uk

DATES FOR YOUR DIARY

- **7th November:** Catherine-de-Barnes Residents Association (RA) Committee Meeting
- **9th November:** Parish Council Meeting
- **12th November:** Hampton Wombles Litter Pick (meet at 11am in White Lion car park)
- **5th December:** Catherine-de-Barnes Residents Association (RA) Committee Meeting
- **10th December:** Hampton Wombles Litter Pick (meet at 11am in White Lion car park)
- **2nd January:** Catherine-de-Barnes Residents Association (RA) Committee Meeting
- **4th January:** Parish Council Meeting and Finance Meeting
- **21st January:** Hampton Wombles Litter Pick (meet at 11am in White Lion car park)
- **Parish Council Meetings:** Take place at 7.30pm. The public are welcome and encouraged to attend. If you would like to join the meeting please contact Julie Barnes (Clerk) at clerk@hamptoninarden.org.uk or phone 01675 442 017 for advice as to how to participate.
- **Residents Association Committee Meetings:** Take place at 7.30pm. Members of the Residents Association are encouraged to attend. Members can request to speak at the start of the meeting and/or if they want to raise a query/question please contact the secretary@catney.co.uk three working days prior to the meeting.

M42 J6 - DUAL BRIDGE LIFT COMPLETION

Specialist teams finally carried out work in October to install two bridges into place over the M42 (following a delay to the planned works). The works took over 40 hours to complete. The two new bridges weighed over 2,050 tonnes! However, the operation was completed ahead of schedule enabling the motorway to fully open 11 hours earlier than scheduled.

The installation of these bridges marks a key milestone for the M42 Junction 6 project team who are delivering a £282m upgrade of the motorway in Solihull.

You can see a time lapse video of the bridge being moved into place here:

https://www.youtube.com/watch?v=ARfbs_FVTgs

THANK YOU FOR READING AND WE WILL SPEAK TO YOU AGAIN IN FEBRUARY

Don't forget to check out our website (www.hamptoninarden.org.uk) and Facebook page (www.facebook.com/pg/HamptonInArdenParishCouncil) for up to date information between Newsletters.